



Regd. Office:
412, N. P. Center, New Dak Bunglow Road, Patna- 800001.
Phone: 0612-2216345 • Fax: 0612-2216347
Email: m.infrasources@gmail.com

Works:
Pitambarpur, Bhikhua On 4 Lane Fathua, Patna – 803201. (Bihar)

Our Sister Concern:
Steel Enterprises - 202, N. P. Center, Patna- 800001.

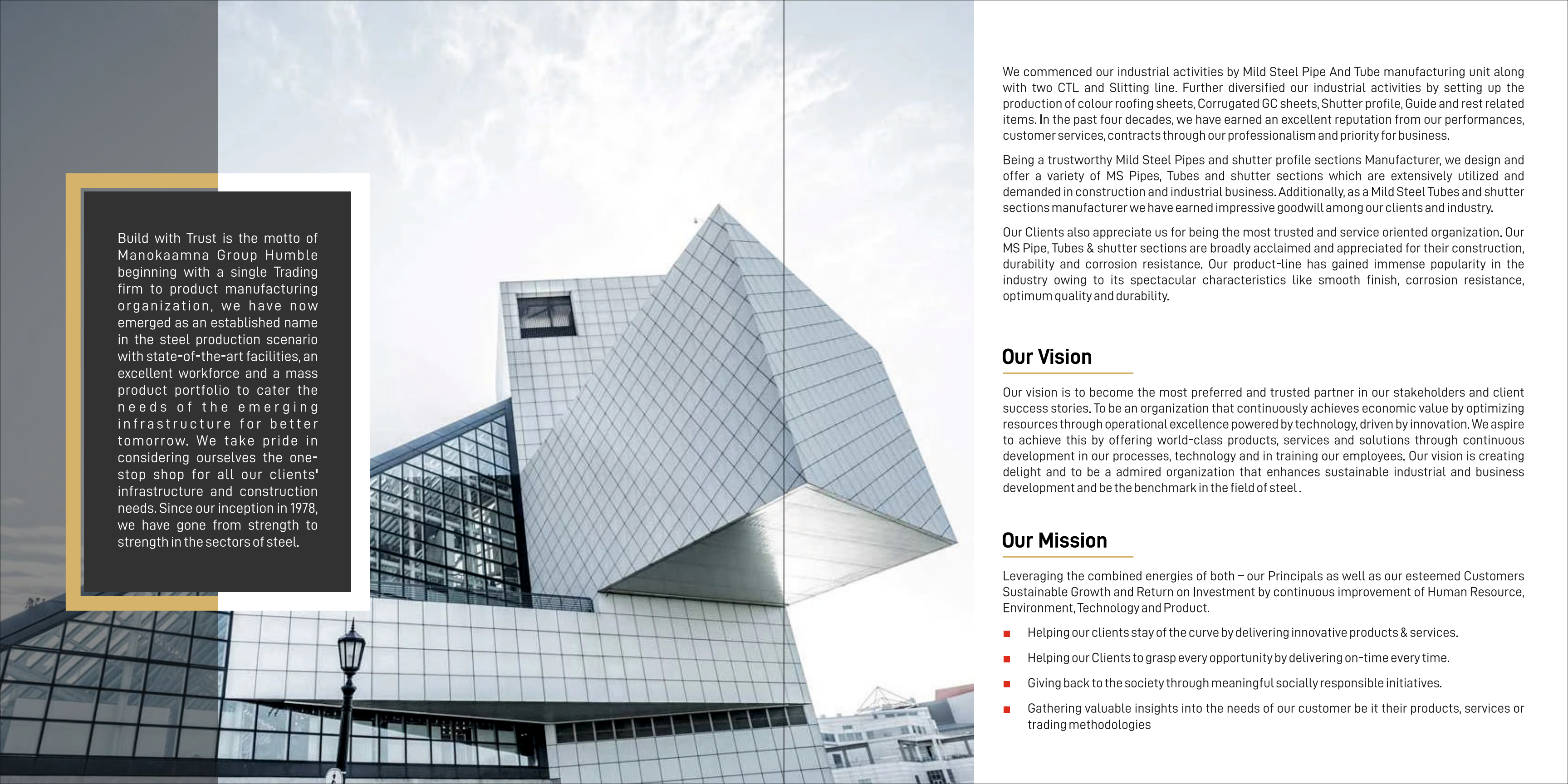
www.manokaamna.in



www.manokaamna.in



BUILD WITH TRUST



Build with Trust is the motto of Manokaamna Group Humble beginning with a single Trading firm to product manufacturing organization, we have now emerged as an established name in the steel production scenario with state-of-the-art facilities, an excellent workforce and a mass product portfolio to cater the needs of the emerging infrastructure for better tomorrow. We take pride in considering ourselves the one-stop shop for all our clients' infrastructure and construction needs. Since our inception in 1978, we have gone from strength to strength in the sectors of steel.

We commenced our industrial activities by Mild Steel Pipe And Tube manufacturing unit along with two CTL and Slitting line. Further diversified our industrial activities by setting up the production of colour roofing sheets, Corrugated GC sheets, Shutter profile, Guide and rest related items. In the past four decades, we have earned an excellent reputation from our performances, customer services, contracts through our professionalism and priority for business.

Being a trustworthy Mild Steel Pipes and shutter profile sections Manufacturer, we design and offer a variety of MS Pipes, Tubes and shutter sections which are extensively utilized and demanded in construction and industrial business. Additionally, as a Mild Steel Tubes and shutter sections manufacturer we have earned impressive goodwill among our clients and industry.

Our Clients also appreciate us for being the most trusted and service oriented organization. Our MS Pipe, Tubes & shutter sections are broadly acclaimed and appreciated for their construction, durability and corrosion resistance. Our product-line has gained immense popularity in the industry owing to its spectacular characteristics like smooth finish, corrosion resistance, optimum quality and durability.

Our Vision

Our vision is to become the most preferred and trusted partner in our stakeholders and client success stories. To be an organization that continuously achieves economic value by optimizing resources through operational excellence powered by technology, driven by innovation. We aspire to achieve this by offering world-class products, services and solutions through continuous development in our processes, technology and in training our employees. Our vision is creating delight and to be a admired organization that enhances sustainable industrial and business development and be the benchmark in the field of steel.

Our Mission

Leveraging the combined energies of both – our Principals as well as our esteemed Customers Sustainable Growth and Return on Investment by continuous improvement of Human Resource, Environment, Technology and Product.

- Helping our clients stay of the curve by delivering innovative products & services.
- Helping our Clients to grasp every opportunity by delivering on-time every time.
- Giving back to the society through meaningful socially responsible initiatives.
- Gathering valuable insights into the needs of our customer be it their products, services or trading methodologies

Our Values

- **Strong Governance** - Being adaptable to changing business norms, trends and technology
- **Transparency** - Maintaining a clear, transparent and accountable relationship with our clients.
- **Care and Compassion** - Practicing sensitivity and inclusiveness in every aspect of business
- **Enhancement** - Contributing to individual growth and development



Our People

- By inculcating a culture of constant product innovation & process improvements.
- By nurturing human capital through training, education and exposure.
- By providing opportunities for growth & development.
- By fostering team-work and mentorship.
- By developing leadership capability.
- Above all work with Passion, Pride, Transparency and Honesty.

Our Society

- Being a responsible corporate citizen : Giving back to the environment what we take.
- Adopting cleaner and greener technologies.
- Providing a safe and healthy work environment.
- Caring for the communities in which we work.
- Demonstrating high ethical standards.
- Above all work with Passion, Pride, Transparency and Honesty.

Our Customers

- By helping them stay of the curve by delivering innovative products & services.
- By helping them grasp every opportunity by delivering on-time every time.
- By transparency in our dealings.

Our Suppliers

- Quality starts from incoming material: we believe in developing our suppliers to our level of competence and quality assurance.
- Ensuring fairness and equitable transaction to all our suppliers in accordance with internally established procedures.
- Ensuring our procurement activities comply with all relevant laws, social norms, and standards ..
- Building up relationship of trust with all our suppliers through reciprocal efforts.

Our Quality

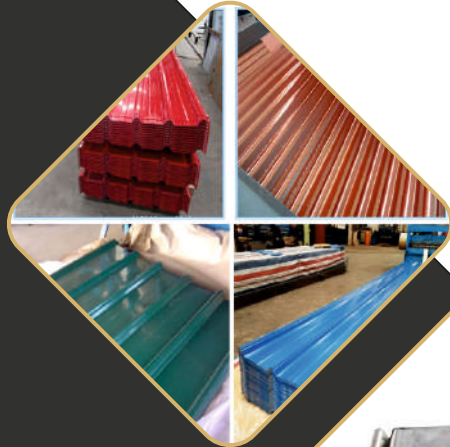
Manokaamna speaks for itself. Promoted by the strong, efficient management of the Manokaamna group, We offer our products at reasonable and competitive rates without compromising on quality. We promise to fulfill the demands of our clients throughout the country and strengthen the nation in the process of building infrastructure for better tomorrow.

Our quality is ensured by constant sampling through a fully equipped chemical lab and specialized equipment The analysis of the product are strictly carried out as per IS: 1161:2014

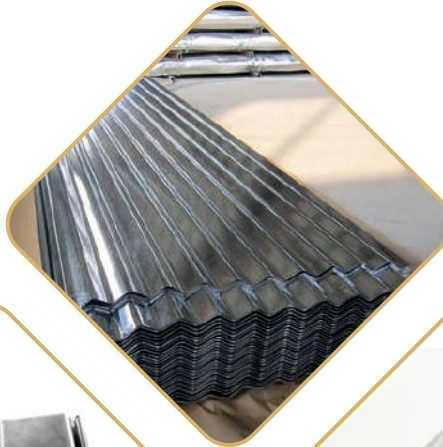


Manokaamna Steel Industries LLP

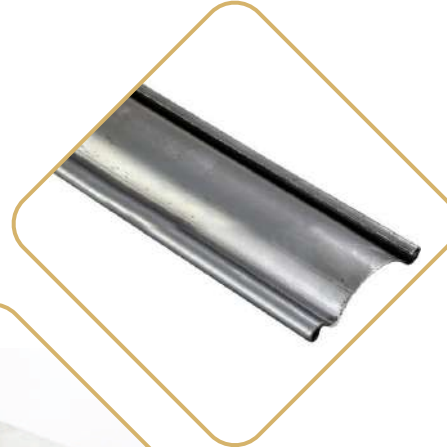
COLOUR ROOFING SHEET
AND WALL CLADDING



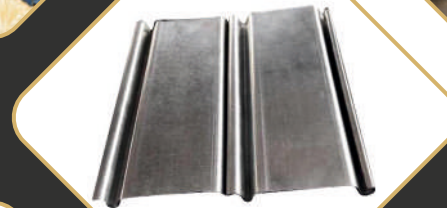
CORRUGATED
G C SHEET



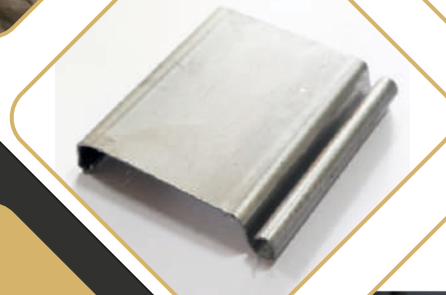
GP SHUTTER
PROFILE W DESIGN



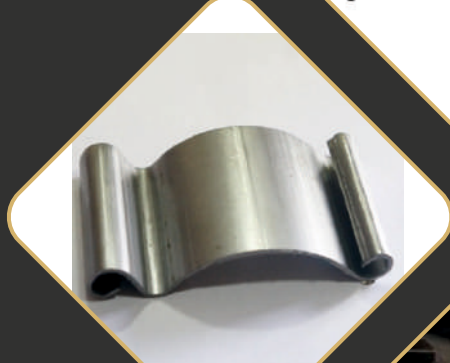
GP SHUTTER
PROFILE FLAT
DESIGN



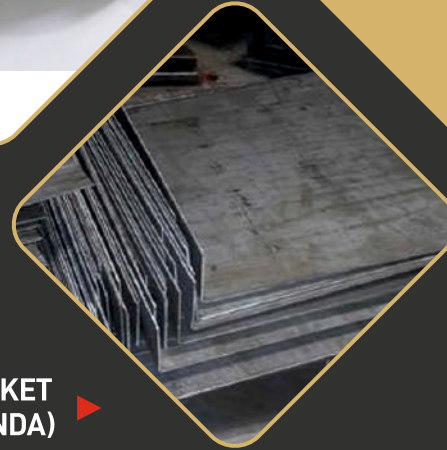
CR SHUTTER
PROFILE FLAT
DESIGN



CR SHUTTER
PROFILE
W DESIGN



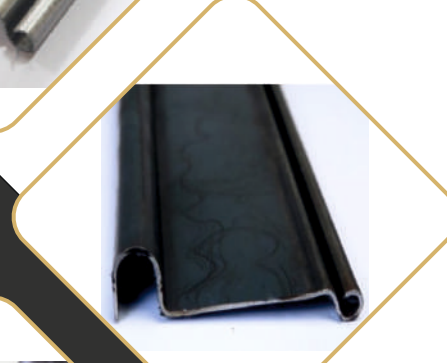
BRACKET
(CHANDA)



SHUTTER SPRING
(UPCOMING)

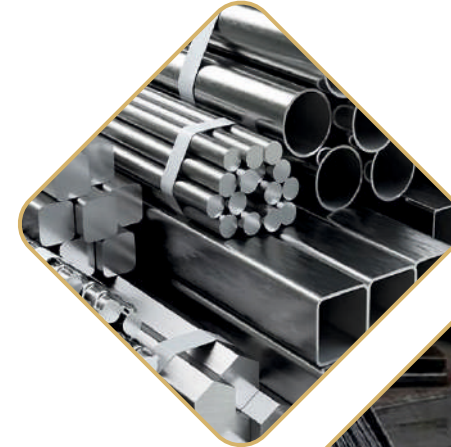


SHUTTER
LOCK PLATE

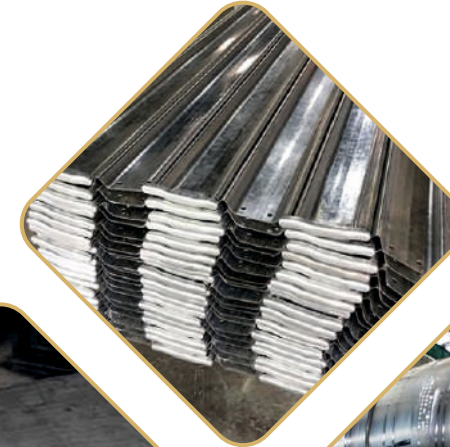


Manokaamna Infraresources LLP

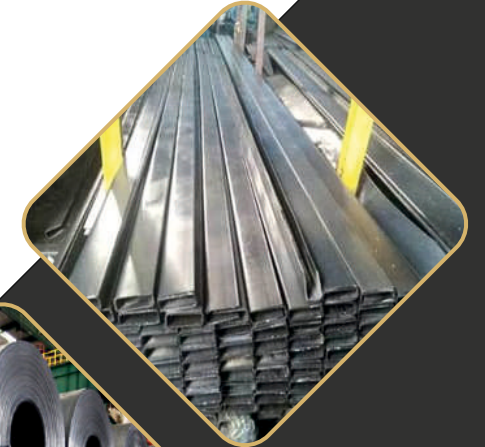
ERW PIPES (ROUND,
SQUARE, RECTANGLE PIPE)



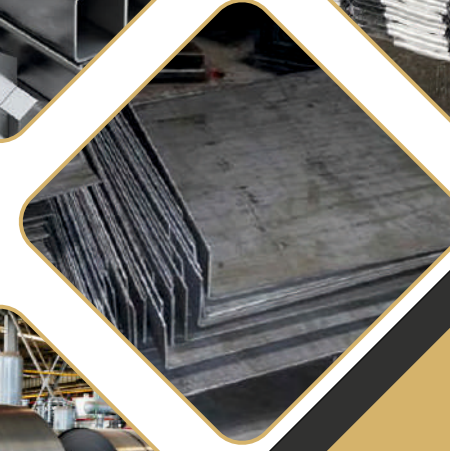
HR SHUTTER
PROFILE



HR/GP GUIDE



HR BRACKETS
(CHANDA)



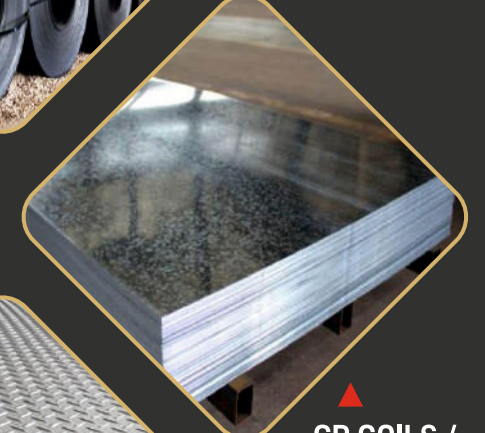
HR COILS/
SHEETS



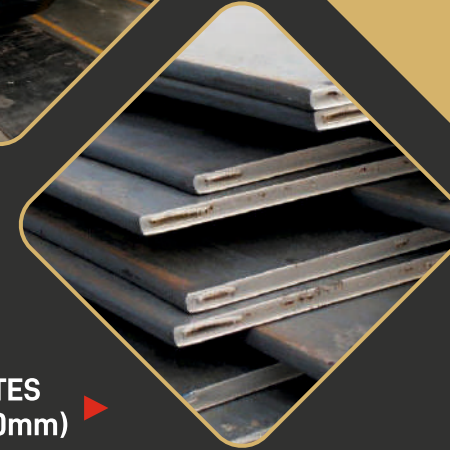
CR COILS /
SHEETS



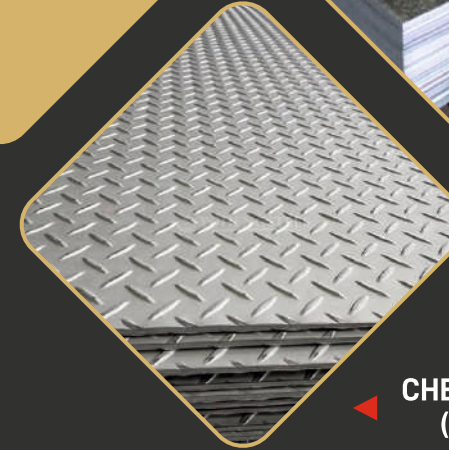
GP COILS /
SHEETS



M.S PLATES
(5mm to 50mm)

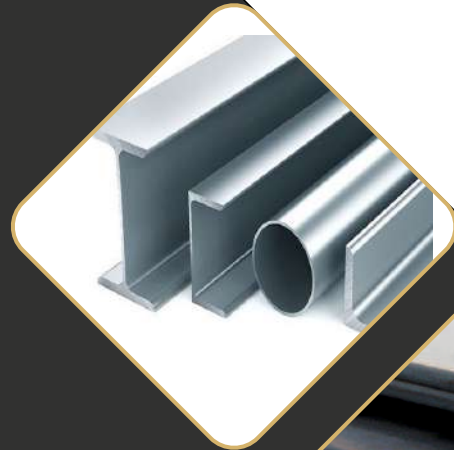


CHEQUERED PLATES
(3mm to 8mm)

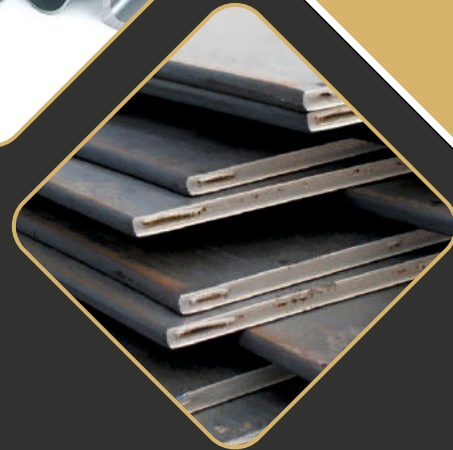
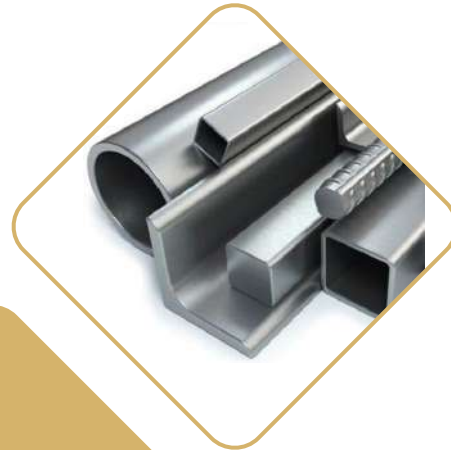


Steel Enterprises

SAIL STRUCTURES
(JOIST, CHANNEL, ANGLES)



ROLLING STRUCTURES
(JOIST, CHANNEL, ANGLE,
FLATS, ROUND, SQUARE)



M S PLATE

Steel Traders

TMT BARS
(RUNGTA TMT, BALMUKUND TMT)



WIRE ROD



BINDING WIRE



CEMENTS